

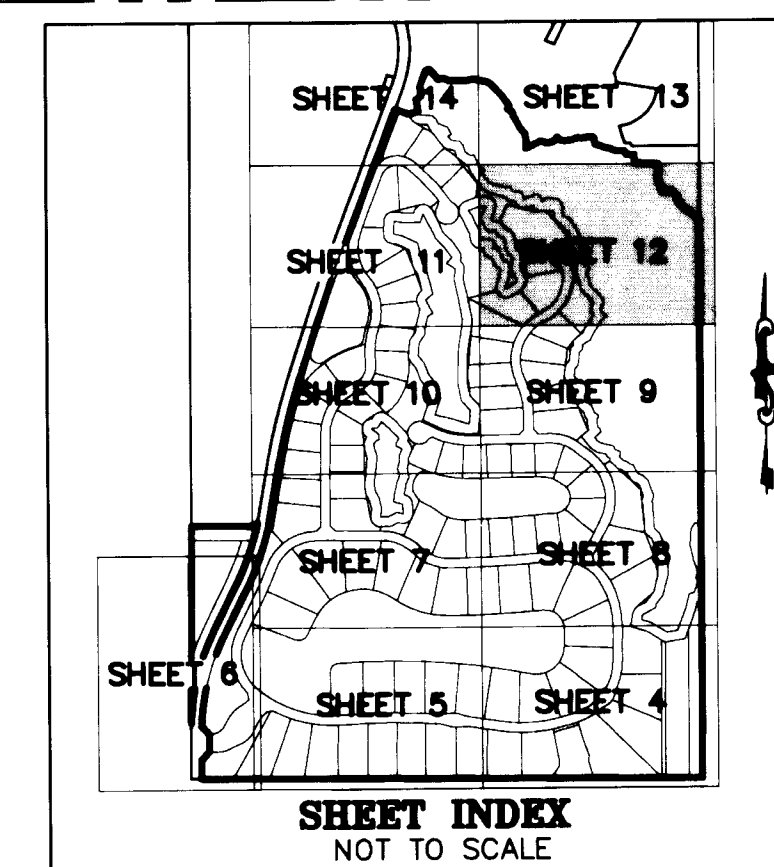
PENNOCK PRESERVE PUD, PHASES 2 & 3

BEING A REPLAT OF "THE OLD PLANTATION PUD", RECORDED IN PLAT
 BOOK 16 AT PAGE 58, PUBLIC RECORDS OF MARTIN COUNTY, FLORIDA,
 TOGETHER WITH OTHER LANDS, ALL LYING IN
 SECTION 28, TOWNSHIP 40 SOUTH, RANGE 42 EAST
 MARTIN COUNTY, FLORIDA
 SHEET 12 OF 14

THIS INSTRUMENT PREPARED BY
 DAVID P. LINDLEY
 OF
CAULFIELD and WHEELER, INC.
 SURVEYORS - ENGINEERS - PLANNERS
 7900 GLADES ROAD, SUITE 100
 BOCA RATON, FLORIDA 33434 - (561)392-1991
 CERTIFICATE OF AUTHORIZATION NO. LB3591

NOTES
 COORDINATES, BEARINGS AND DISTANCES
 COORDINATES SHOWN ARE GRID
 DATUM = NAD 83 (90/98 ADJUSTMENT)
 ZONE = FLORIDA EAST
 LINEAR UNIT = US SURVEY FEET
 COORDINATE SYSTEM 1983 STATE PLANE
 TRANSVERSE MERCATOR PROJECTION
 ALL DISTANCES ARE GROUND UNLESS NOTED OTHERWISE
 SCALE FACTOR = 1.0000307
 GROUND DISTANCE X SCALE FACTOR = GRID DISTANCE
 BEARINGS AS SHOWN HEREON ARE GRID DATUM,
 NAD 83 (90/98 ADJUSTMENT), FLORIDA EAST ZONE.

MATCHLINE SEE SHEET 13 OF 14



SHEET INDEX
 NOT TO SCALE

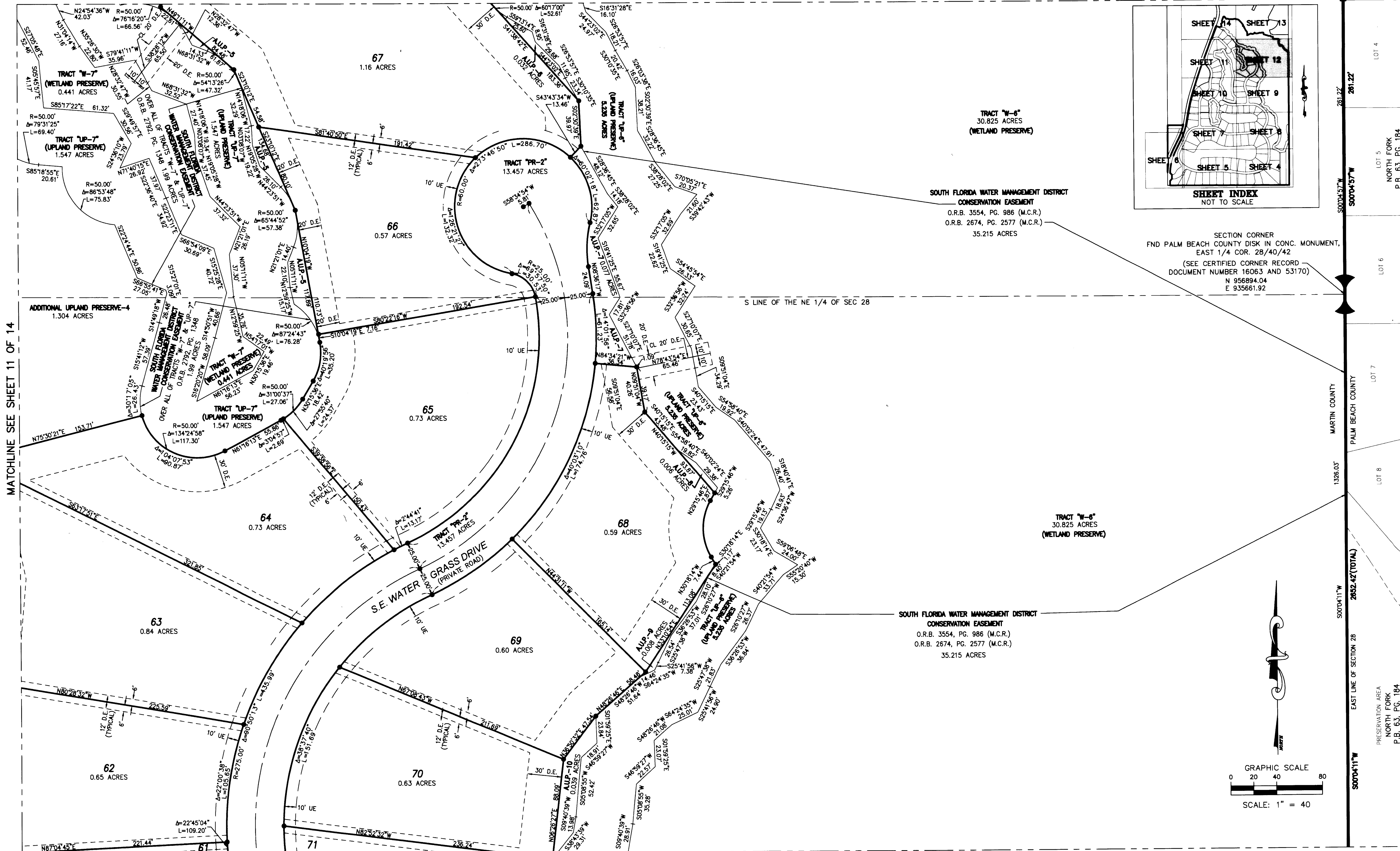
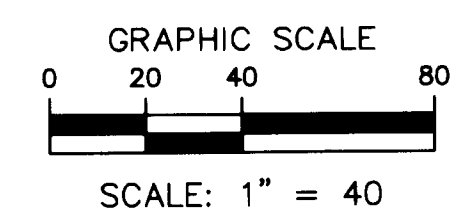
SECTION CORNER
 FND PALM BEACH COUNTY DISK IN CONC. MONUMENT,
 EAST 1/4 COR. 28/40/42
 (SEE CERTIFIED CORNER RECORD
 DOCUMENT NUMBER 16063 AND 53170)
 N 956894.04
 E 935661.92

TRACT "W-6"
 30.825 ACRES
 (WETLAND PRESERVE)

SOUTH FLORIDA WATER MANAGEMENT DISTRICT
 CONSERVATION EASEMENT
 O.R.B. 3554, PG. 986 (M.C.R.)
 O.R.B. 2674, PG. 2577 (M.C.R.)
 35.215 ACRES

TRACT "W-6"
 30.825 ACRES
 (WETLAND PRESERVE)

SOUTH FLORIDA WATER MANAGEMENT DISTRICT
 CONSERVATION EASEMENT
 O.R.B. 3554, PG. 986 (M.C.R.)
 O.R.B. 2674, PG. 2577 (M.C.R.)
 35.215 ACRES



MATCHLINE SEE SHEET 11 OF 14

MATCHLINE SEE SHEET 9 OF 14